

Catling, Ellery unleash for '09

Season highlights include the eyelet leather vest, hand-adorned with wool felt tassels



FASHION
Desmond Eddy

PERTH designers have unveiled their 2009 autumn-winter ready-to-wear collections.

Chrissie Catling, designer and founder of S2, follows a 'no rules' approach to fashion and includes pieces that can be worn many ways to create a number of different looks.

She has created pieces that have a unique edge to them and sees the fusion of the classic and individual – garments that will stand the test of time.

Contemporary tones of ivory, flint milk and black complemented by this season's vibrant blue/purple are cut in signature-style quality and fabrics.

The showstopper dress – the Pod 11 – is a twisted design, delivering a unique pod effect that can be paired with a long-sleeve top and chunky boot, or teamed simply with a singlet, perfectly illustrating the diversity and timeless appeal of this collection.

Meanwhile, Perth girl turned entrepre-

neur Kym Ellery draws inspiration from Jerry Hall and an 80s glam Daryl Hannah for her AW09 collection, *Under the Cherry Moon*.

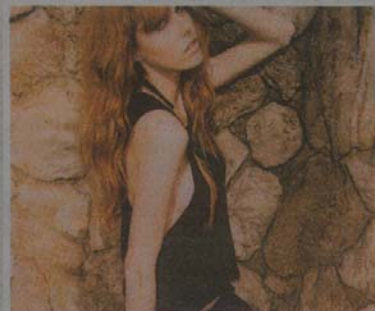
The indescribable mystique of the siren is the perfect analogy for the essence that is Ellery the label and this collection.

Soft neutral colours are mixed with a black gothic edge, with highlights of bright goldfish orange and blood red.

Ellery's key design and company aesthetics continue into this current season, with only the best fabrics and finishes. Silk, wool jersey, felt, yarn and leather are all used as well as a stand-out metallic lace.

Highlights of the season include the eyelet leather vest, hand-adorned with wool felt tassels, jersey fitted mini dress with long dramatic trailing cape dropping from the shoulder blades, signature studded leather jackets and the truly precious metallic lace top.

Ellery
Available at Emporia, Subiaco;
Billie & Rose, Mt Lawley and Perth.



Chrissie Catling
Available at S2, Angove Street,
North Perth.