

in this issue...

- [Spring/Summer 2009-10](#)
- [Jodee Knowles' Artwork](#)
- [Djafaar Bags](#)
- [Trung Arrivals](#)
- [S2](#)
- [Gem Kingdom](#)
- [Claus Porto](#)
- [Siren](#)
- [Designer Profile: Chrissie Catling, S2](#)
- [Style Profile: Lisa, S2](#)

Winter Sale Now On

Up to **50%** off selected styles, denim and product
with
New styles arriving in store weekly

SPRING/SUMMER 2009-10

The ever- changing gallery space provides a contemporary backdrop for the S2 collections.

For Spring/summer 2009/10 you will also find selected pieces from complementary Australian designers including Alistair Trung, Lui Hon, Therese Rawsthorne, Ess. Hoshika, Lorinda Grant, Rant and new footwear designer Phong Chi Lai.

You will also find incredible jewellery, such as hot Dutch label Gem Kingdom, Johnny Ramelli, French label LVR and Australian work by Kylie Gartside, gorgeous bags and belts from MO851 and Alan Myerson, plus our luxury products.

[top](#)

JODEE KNOWLES' ARTWORK

Visitors to S2 are now greeted with a floor to ceiling topless woman created in the signature Knowles' style, rapidly gaining notoriety around the globe.

Chrissie is thrilled with the piece she commissioned for her unique gallery-style retail space.

"Jodee's work brings a new energy to S2," she said.



[top](#)

DJAFAR BAGS

"Adorn yourself in the pride and beauty of Africa" Djafaar's 2009 collection of springbok fur bags showcases the splendour of African accessories. Each bag is beautifully designed, carefully crafted and complete with quality style. Djafaar obtains all hides through a government approved program making it environmentally friendly and a piece which ensures employment opportunities to previously disadvantaged communities. S2 stocks the small postman and large postman bag in black, chocolate brown and hot red. A great statement piece!



[top](#)

TRUNG ARRIVALS

A store favourite and top seller is the amazing Alistair Trung from Sydney. Trung's directional and eccentric pieces have captured the bold and encouraged them to take a further step to the left. Trung's cleverly designed collection is most certainly for those wanting to be a little different and stand out.



Trum

Billowy drop crotch pants with 3 dimensional knees, wool dresses with straps, rabbit fur vests, bat wing tops, heavy knit cardigans, sensational silk shirts and leggings are only a few of the exciting pieces available. So step to the left and visit S2 to be enchanted by the works of Alistair Trum.

[top](#)

S2



The signature label of the S2 concept store, designed by Chrissie Catling, has once again achieved an enigmatic and desirable high street collection. The selections of wool, jersey, cotton and silk together form a collection which depicts the style of the dynamic and confident women who wear S2.

The winter range is complete with stunning steel cap dresses architecturally shaped and formed, warm wool pants, sensational silks and low crotch leggings which are all the trend this season.

New seasonal styles will be in store early July.

[top](#)

GEM KINGDOM



A stunning selection of the international handcrafted jewellery label Gem Kingdom, from the Royal Kingdom of the Netherlands, has arrived at S2 and has already drawn much attention.

The collection "Primal meets Sophistication" consists of sterling silver, white and grey pearls, onyx, resin, cameo, amethyst and gold. All chains can be accessorised with locket, pendants, icons and symbols. S2 stocks a hand selected number of pieces and one can personally have pieces made to order.



[top](#)

CLAUS PORTO

The luxurious handmade Portuguese soaps by Claus Porto are now in at S2. Each soap is milled seven times making it very creamy and last longer than a regular soap. They are packaged in vintage paper complete with the traditional Claus Porto wax seal. Scents such as almond milk, tuberose, wild orchid, tobacco blossom, pomegranate, lemongrass and sea mist are only a few to delight the senses.

Claus Porto soaps make beautiful gifts or are simply great to have in the bathroom or lingerie drawer. Claus Porto soaps are \$18.95 each.



[top](#)

SIREN

Siren has released another collection of large wooden cog necklaces, resin heart necklaces, leather cuffs and leather studded scarves. Inspired by her background in engineering and textiles, Bronwyn Eager has created a dynamic collection of contemporary jewellery to suit women who admire bold statement pieces. All pieces are designed and made in Australia.



[top](#)

DESIGNER PROFILE: CHRISSIE CATLING, S2

Chrissie Catling is the founder of directional Australian fashion label S2. The passionate, self-taught designer launched S2 in 2004 and immediately attracted a loyal following from women with a strong sense of style and individualism.

Since then her bold minimalist look- built around gorgeous, quality fabrics and interesting cuts- has continued to evolve and demand attention. Capturing the interest of fashion media and buyers alike, the label is now stocked in boutiques across Australia.

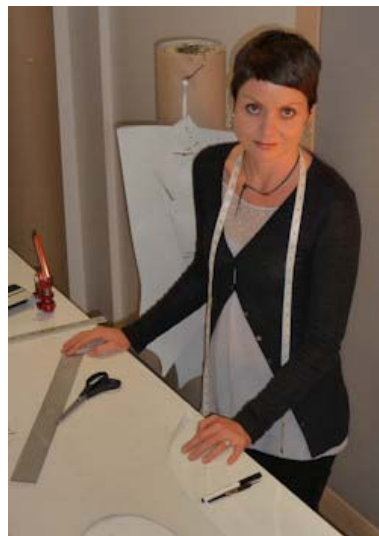
S2 was voted as the 'standout' of the 2008 Perth Fashion Festival. Chrissie's focus is on creating a total S2 experience for women.

She endeavours to assist women to find themselves, rather than be dictated to by offering her beautiful selection of garments and product, in an environment that is removed from the everyday shopping experience.



[top](#)

STYLE PROFILE: LISA, S2



Since the conception of the S2 label, Lisa has been working alongside Chrissie as the pattern maker and more recently as a style assistant for S2 on Tuesdays.

Lisa's expertise and technical background have been employed in creating the bold and at times unusual shapes which form the S2 collections. Both technically and intuitively Lisa has an amazing ability and willingness to expand concepts and styles.

Not only are Lisa's skills admired but her openness and willingness to share information and knowledge on fashion, textiles and design. Lisa is always keen to help those around her and as a result has become a much loved and appreciated member of the S2 team.

When Lisa is not working on patterns and designs she is busy with her two young children Asha and Cara.

[top](#)

Monday - Saturday: 10.00 to 5.00

phone: +61 8 9227 1139 | inet voip: +61 8 6262 0147 | office ph/fax: +61 8 9328 2568

website: www.s2perth.com.au

Join us on [Facebook](#)

[Unsubscribe from this list.](#)

Copyright (C) 2009 cc base pty ltd