

S2 / Glyde St Now Open

This month, S2 clients celebrated with us as we launched our new S2 / Glyde Street boutique in Mosman Park. S2 Glyde Street houses the seasonal S2 collections, as well as selected clothing and accessories by complementary Australian and international designers, such as Alistair Trung, Lui Hon, Therese Rawsthorne, Ess. Hoshika, Lorinda Grant, Rant and Phong Chi Lai. S2 / Glyde Street also showcases the work of its first featured artwork by Guy Matthews, available for purchase from the new space..

Founder and designer Chrissie Catling says that S2 “wanted to create a shopping experience removed from the ordinary, a sanctuary for our clients.” The innovative space and thoughtful service at Glyde Street pursue that goal artfully, as S2 clients find themselves in a carefully curated collection of fine garments, featuring the bold, minimalist style in gorgeous, quality fabrics that has earned S2 its reputation.

Thank you to all who joined us for the launch on 28th November, where we enjoyed an address by Professor Ted Snell, fine afternoon tea by RipeArt and sparkling wine by Lamonts. It was a wonderful afternoon and a lovely way to launch our new space.

S2 Glyde Street is nestled among antique stores, art galleries and contemporary furniture showrooms in the serene shopping strip in Mosman Park. S2 is delighted now to offer two beautiful spaces for clients to enjoy: S2 / Angove Street and S2 / Glyde Street.



top

S2 SPRING/SUMMER 2010

'Summer Love', S2's newly released Spring/Summer 2010 collection, has been releasedis now in store. This season's S2 collection has elevated to a new level in Australian contemporary fashion. The fabrics and design work have interlinked to form an avant-esque, ready to wear high street collection.

S2's Spring/ Summer is filled with magenta and cream silks, transformer swing tops, Tag dresses, skirts and summer lov-ing leggings. 'Summer Love' is fun and flirty, yet bold and confident in its direction for the new season.



top

LUI HON

For the first season, S2 is stocking Melbourne label LUI HON. 'Voice of Hope' has a strong directional style, playing with dramatic lines and strong natural colours. Lui Hon is sold exclusively in just four of Australia's high end boutiques, including S2. Designer, Lui Hon, was a contestant on the 2008 series of Project Runway finishing fourth. Since then, Hon has showed at L'Oreal Fashion Week in Melbourne and is currently designing AW10. Lui Hon is a label to keep your eye on in the future!



top

ALISTAIR TRUNG

Sydney designer Alistair Trung has once again designed created a bold and exotic collection.

Trung has built around international styles with his exquisite embroidered cottons and silks, long mesh and silk leggings, fantastic fine knits and the season standout: - the Kalahari tunic. (Although we have to admit that tThe hand beaded supernova sequin poncho is another S2 favourite.)

Alistair Trung this season is a voyage around the world and throughout the ages



top

PHONG CHI LAI*

The handcrafted sandals from Phong Chai Li have arrived at S2, in time to slip them on for the balmy summer days. Phong, the Melburnian designer, was inspired by the concept of male/female identity in the modern world. This is visible in his footwear a fusion of masculine shoe structure with a feminine detail and finish. Phong's intention is to create "shoes that are simple and elegant while still retaining uniqueness and beauty". A variety of the Phong Chi Lai sandals are available at S2.



** only available Glyde St*



top

JOHNNY RAMLI

Indonesian designer, Johnny Ramli's assortment of fun Polyester and coloured patent leather bags, canvas totes, punched leather overnight bags, clutches and rose gold bracelets have all been handpicked for S2 by Chrissie Catling. The new Ramli range is filled with some of this season's hottest accessories. Whether going away for a couple of nights or simply doing the grocery shopping, Ramli has designed a bag for every occasion.



top

THERESE RAWSTHORNE



One of Australia's hottest up and coming labels in chic- feminine womenswear is Therese Rawsthorne. Having worked with Issey Miyake and Oswald Boateng in London, Rawsthorne has developed an aesthetic for classical, simple garments for women with a high end finish.

Featured in Sydney's 2009 Rosemount Fashion Week, Rawsthorne has captured the attention of the Australian and International fashion media. S2 stocks some of the more playful pieces of Rawsthorne's collection.

top

ESS. HOSHIKA

Once again Ess. Hoshika has created an easy to wear, directional collection, featuring cotton box cut tees with silk neck lines and structured white shirts. The Melbourne style duo is re-discovering original design work whilst still maintaining their signature style and quality. Ess. Hoshika is now available at S2.

top

PLAIN & SIMPLE

A truly gorgeous range of natural products from Plain & Simple is available now at S2. Lovely gifts or a small indulgence for oneself, the liquid soaps, body milk, shower and bath bubbles and perfumed water are only \$22 each. The vintage stationery is 100% sustainably manufactured here in Australia.

All products are free of:

- Tar derivatives,
- Petroleum bi-products,
- Detergents,
- Mineral phosphates,
- Sodium laureth phosphates,
- PEG or parabens,
- Colourings,
- Animal ingredients; and
- Are not tested on animals.

Practical and beautiful, plain and simple.



top

STYLE PROFILE: JAMES, S2

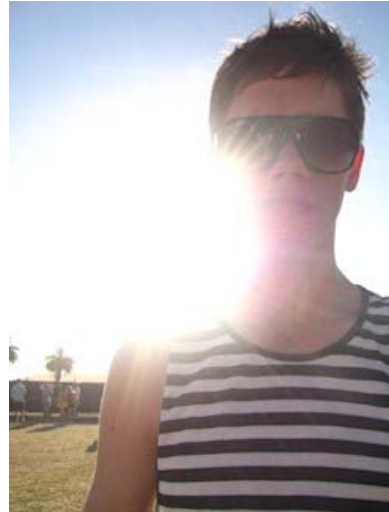
James became part of the S2 team in March 2009 and is one of our most treasured team members.

James specialises in styling S2's customers. He also plays a large role in assisting Chrissie liaise with stockists and media and styled Western Australia's main two fashion events - StyleAID and Perth Fashion Festival.

James is currently completing a double degree in Bachelor of Laws/Bachelor of Arts at the University of Notre Dame in Fremantle, so we here at S2 feel fortunate to have James' assistances three days a week.

Widely passionate about fashion on a global scale, James is in the process of establishing wolfeslair.com, an online store specialising in eclectic men and women's vintage, retro, fur and pre-owned designer pieces, launching in January 2010.

Come in and meet with James to receive the most wonderful service in Perth at either our Angove Street or Glyde Street boutique!



top

S2 / **Angove St**: Mon - Sat: 10.00 to 5.00 | phone: +61 8 9227 1139

S2 / **Glyde St**: Tue - Sat: 10.00 to 5.00 | phone: +61 8 9383 1494

office ph/fax: +61 8 9328 2568

www.s2perth.com.au

join us on Facebook

unsubscribe from mailing list

Copyright (C) 2009 cc base pty ltd